



Quick Start Guide

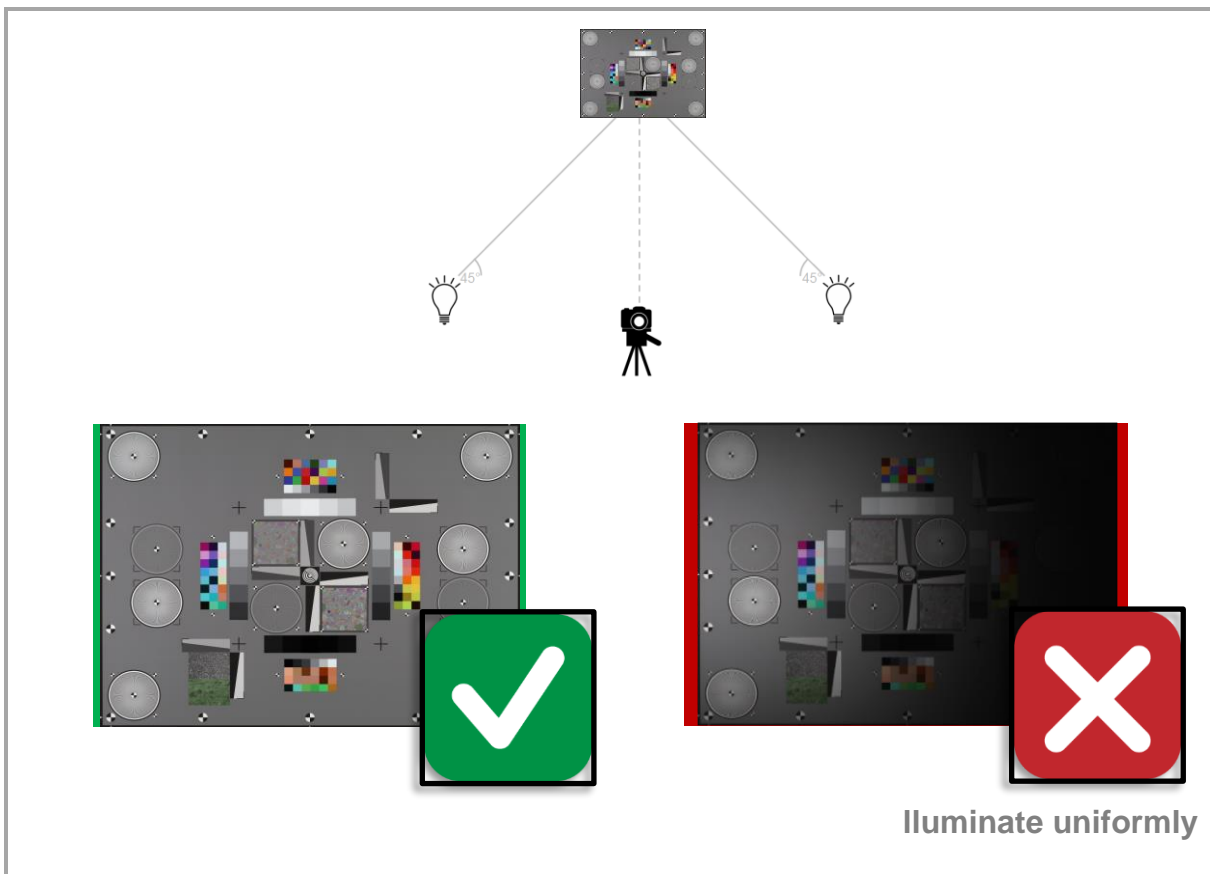
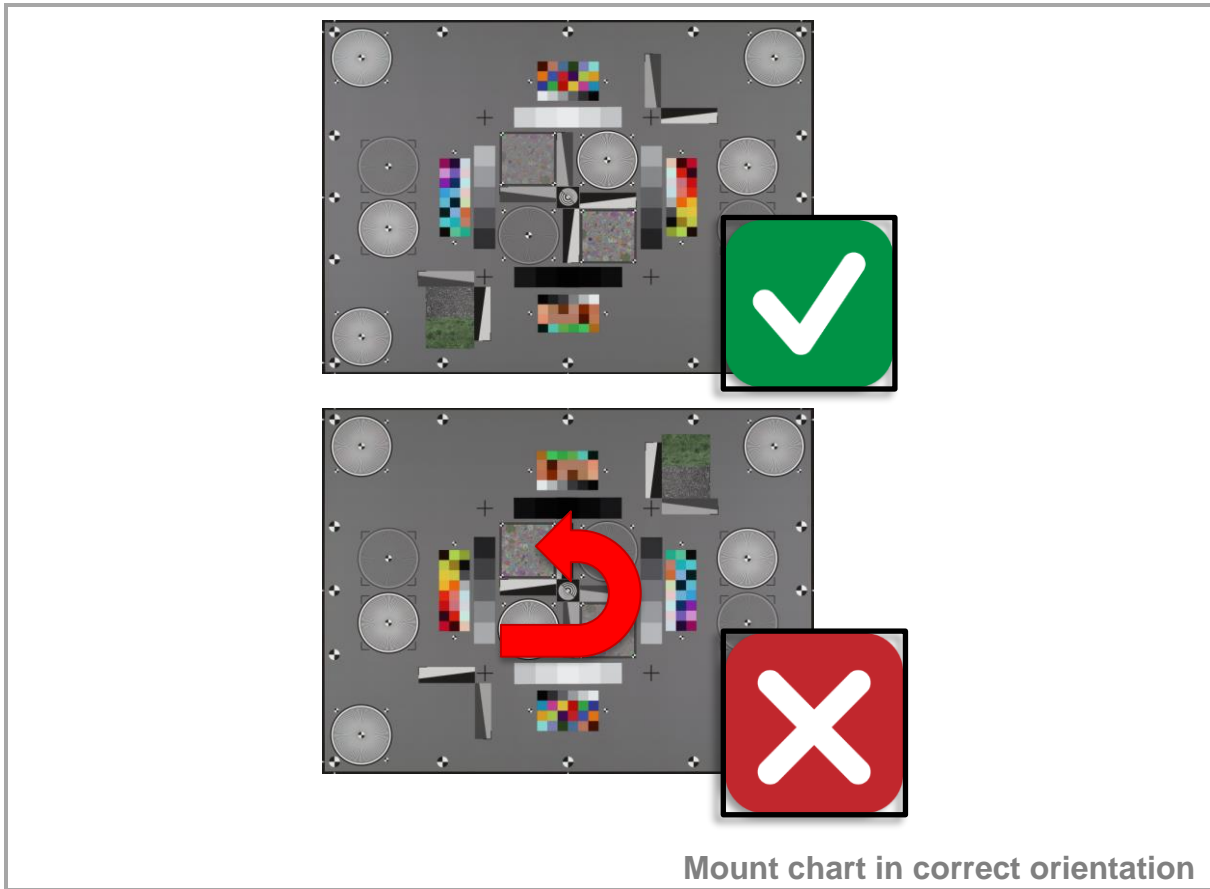
TE42-LL

December 17, 2018



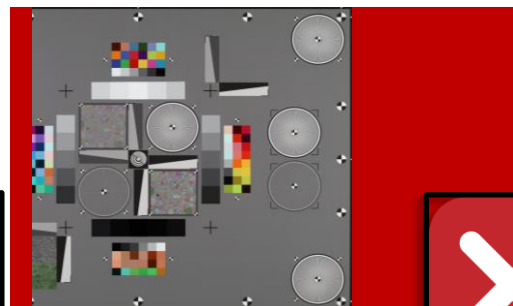
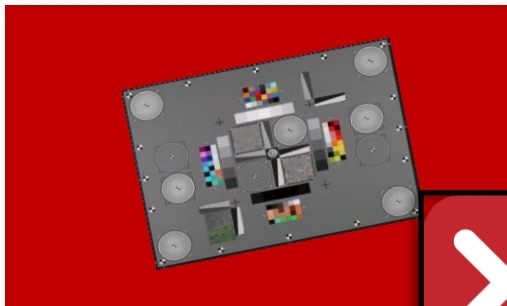
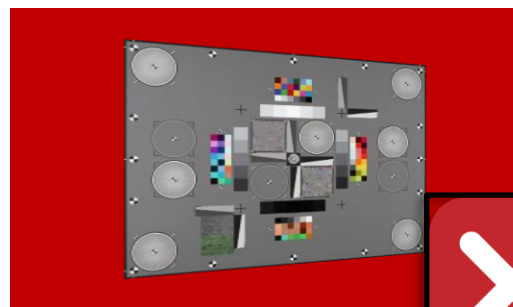
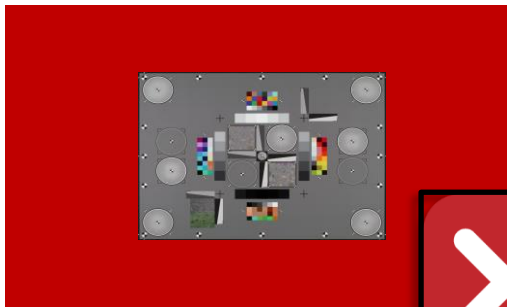
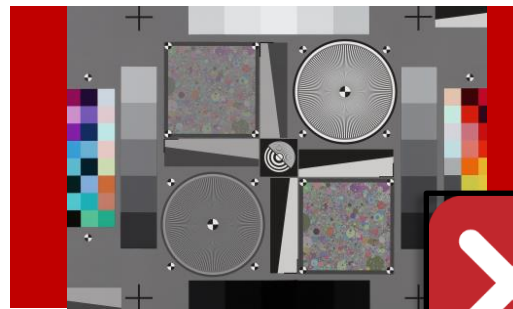
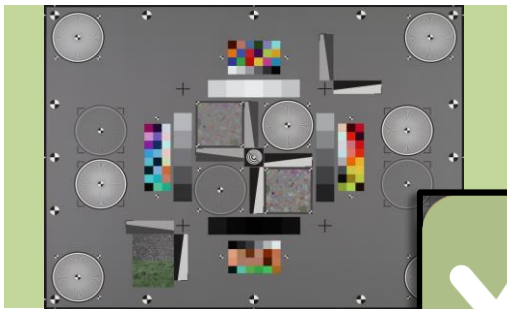
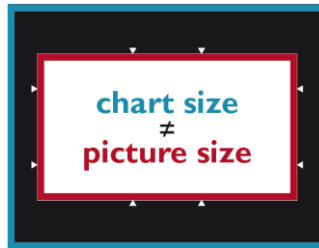


1 PREPARE CHART





2 PREPARE CAMERA



Align camera and chart



a b c f i
j k m n p
U b h i j
K N S W Y

Check camera settings and take pictures

3 START SOFTWARE

FREE DEMO **OR BUY**

Request free demo or buy

www.image-engineering.de

Use shipped DVD or download*

Install

Copy reference files if necessary

Attach USB dongle and run

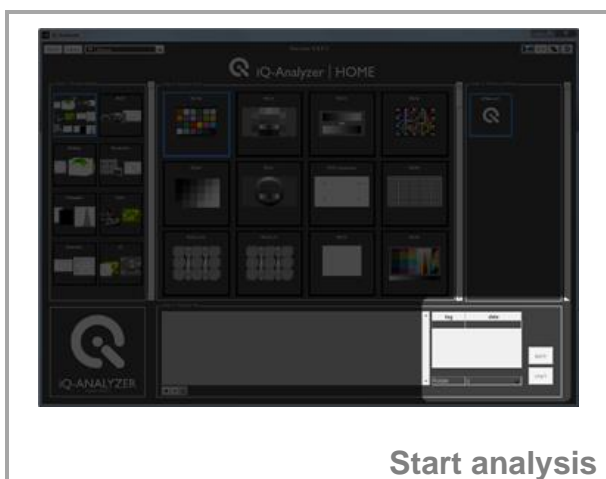
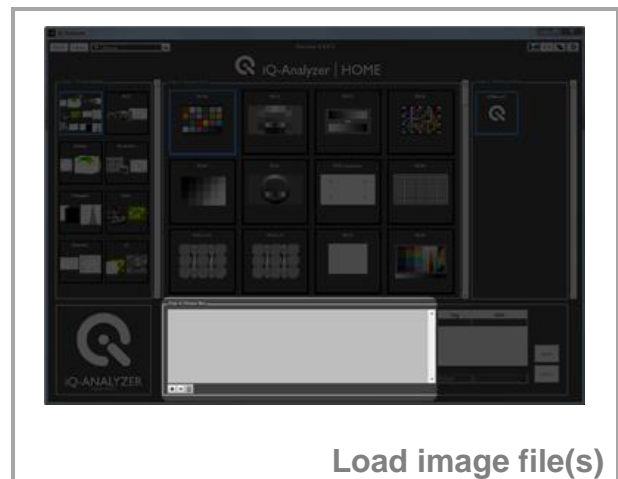
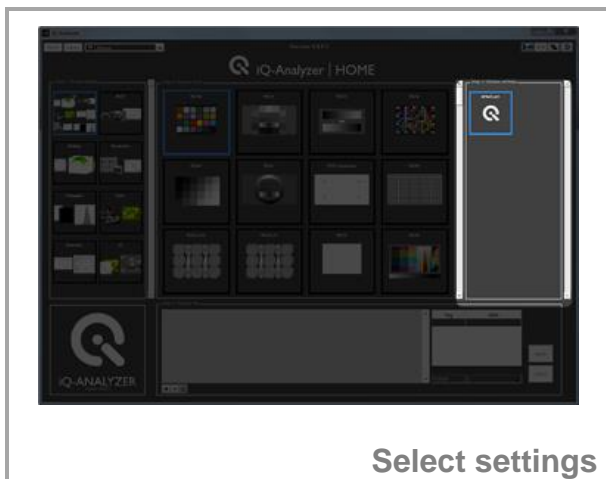
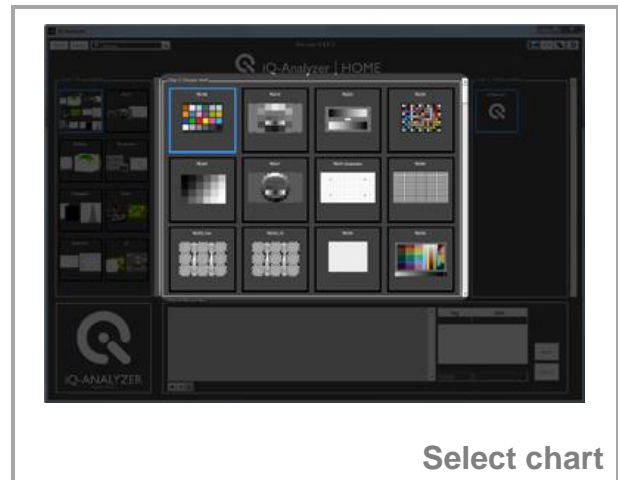
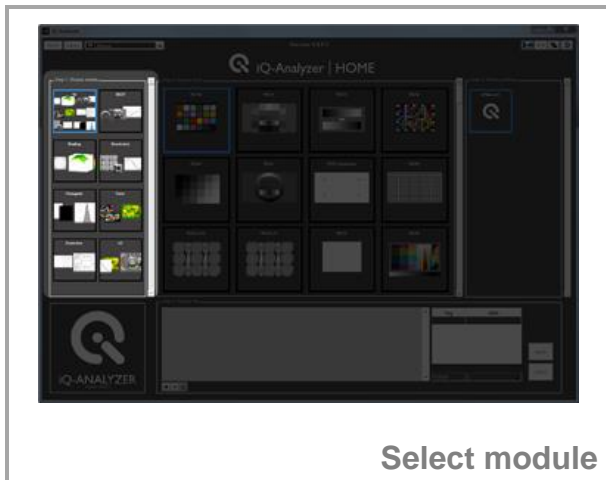
For a three month trial version of the iQ-Analyzer please contact

sales@image-engineering.de

* <https://www.image-engineering.de/products/software/376-iq-analyzer#downloads>



4 USE HOME SCREEN



For customizing the HOME SCREEN to your specific needs, please read the

iQ-Analyzer user manual *

Please note: Default Home Screen just contains default settings.

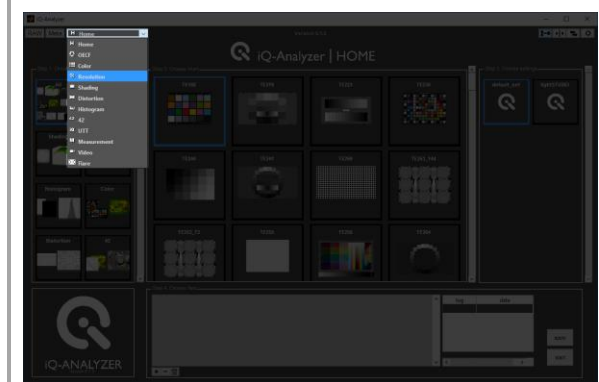
* https://www.image-engineering.de/content/products/software/analyzer/downloads/iQ-Analyzer_manual.pdf



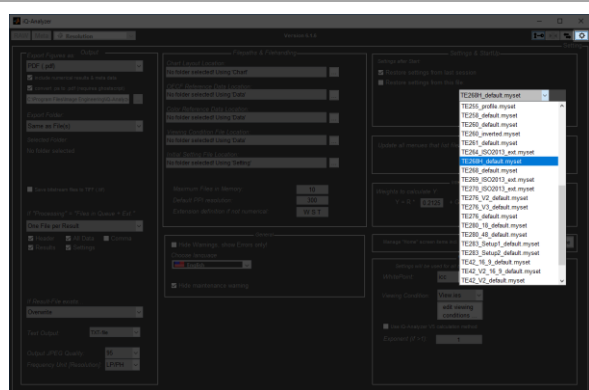
5 USE OF ADMINISTRATOR MODE



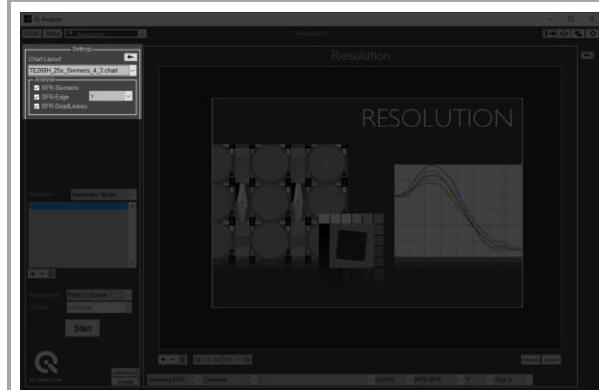
Enable Administrator Mode



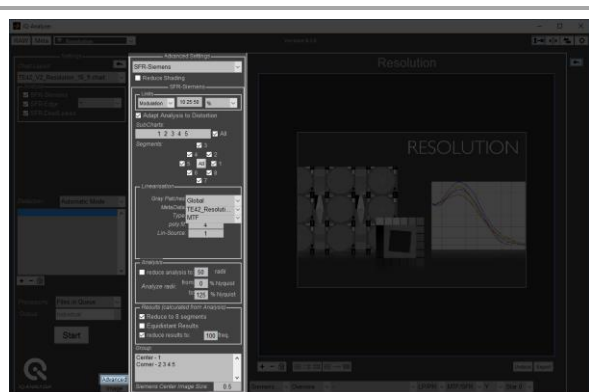
Choose module



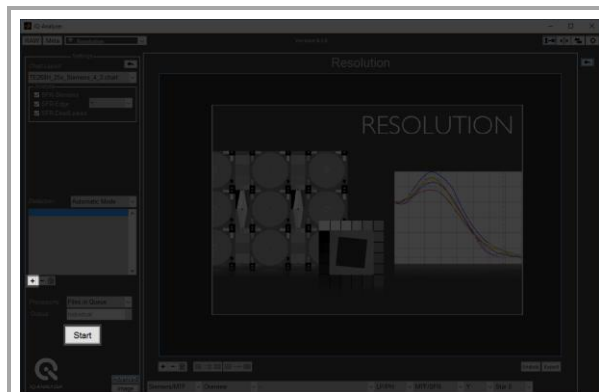
Go to Advanced Settings and choose .myset file for chart depending Settings



Check chart depending on Settings



Check Advanced Settings



Load image file(s) and start analysis

For all chart specific information about Settings and Advanced Settings please read the
iQ-Analyzer user manual *

* https://www.image-engineering.de/content/products/software/analyzer/downloads/iQ-Analyzer_manual.pdf



6 WATCH THE RESULTS

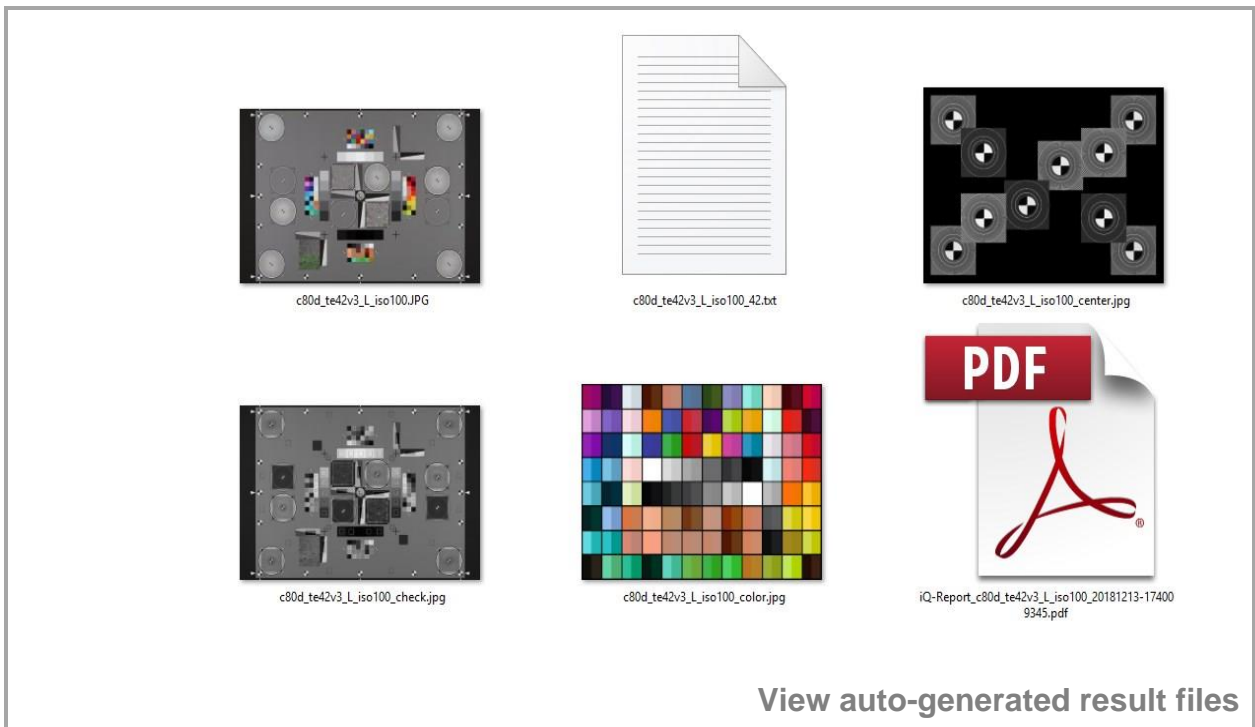
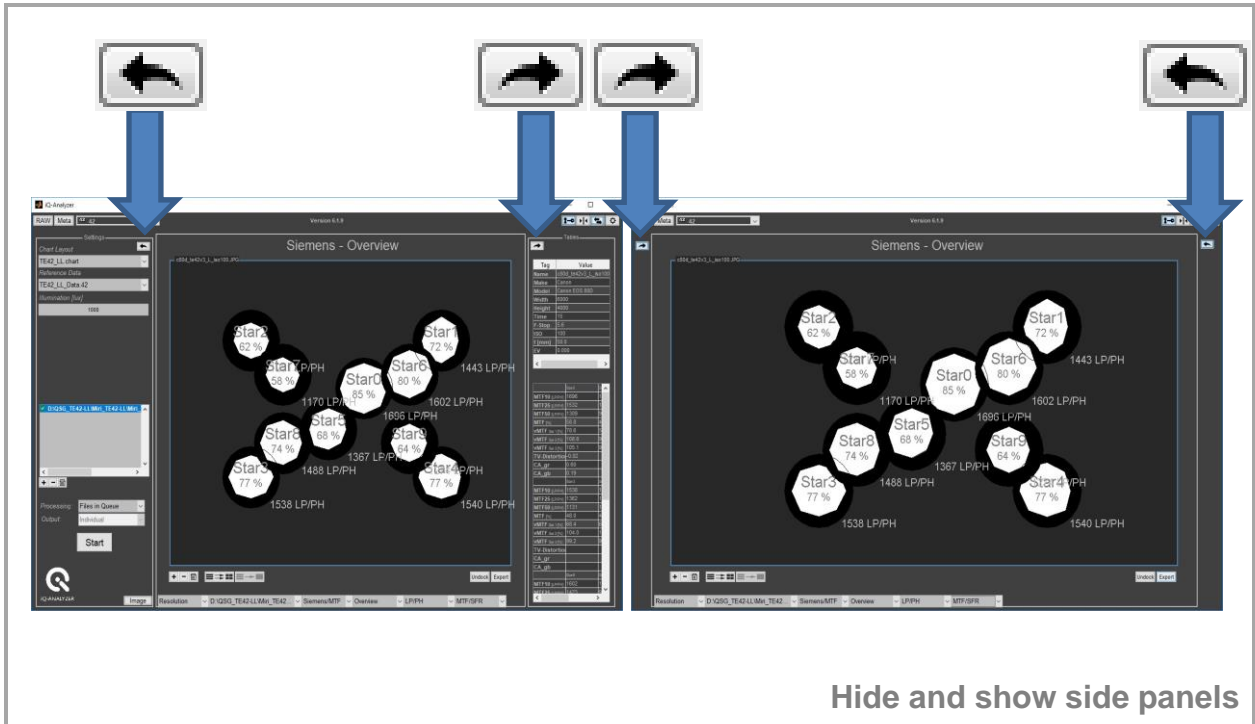
Image **Result**

Toggle between image and results

Star	Resolution (LP/PH)	MTF (%)
Star1	1443	72%
Star2	1170	62%
Star3	1538	77%
Star4	1540	77%
Star5	1895	68%
Star6	1443	80%
Star7	1602	85%
Star8	1488	74%
Star9	1367	64%
Star0	1802	85%

Toggle between different result views

OEFC	Color	VV	RGB	Luminance	Set 1
Color	Resolution	Noise	Y	Density	Set 2
Shading	Shading	CIE	RGBY	Exposure	Set 3
OEFC	C:\analyzer\imageSet\42...	OEFC	RGB	Reflectance	All
				logarithmic	
				linear	
				logarithmic	Set 1



Congratulation!
You ran your first analysis!



7 WHAT'S NEXT?

Siemens - Overview

Star2: 62 %
Star7: 58 %
Star0: 85 %
Star6: 80 %
Star1: 72 %
Star8: 74 %
Star5: 68 %
Star3: 77 %

1443 LP/PH
1170 LP/PH
1602 LP/PH
1696 LP/PH
1538 LP/PH
1488 LP/PH
1540 LP/PH

Export

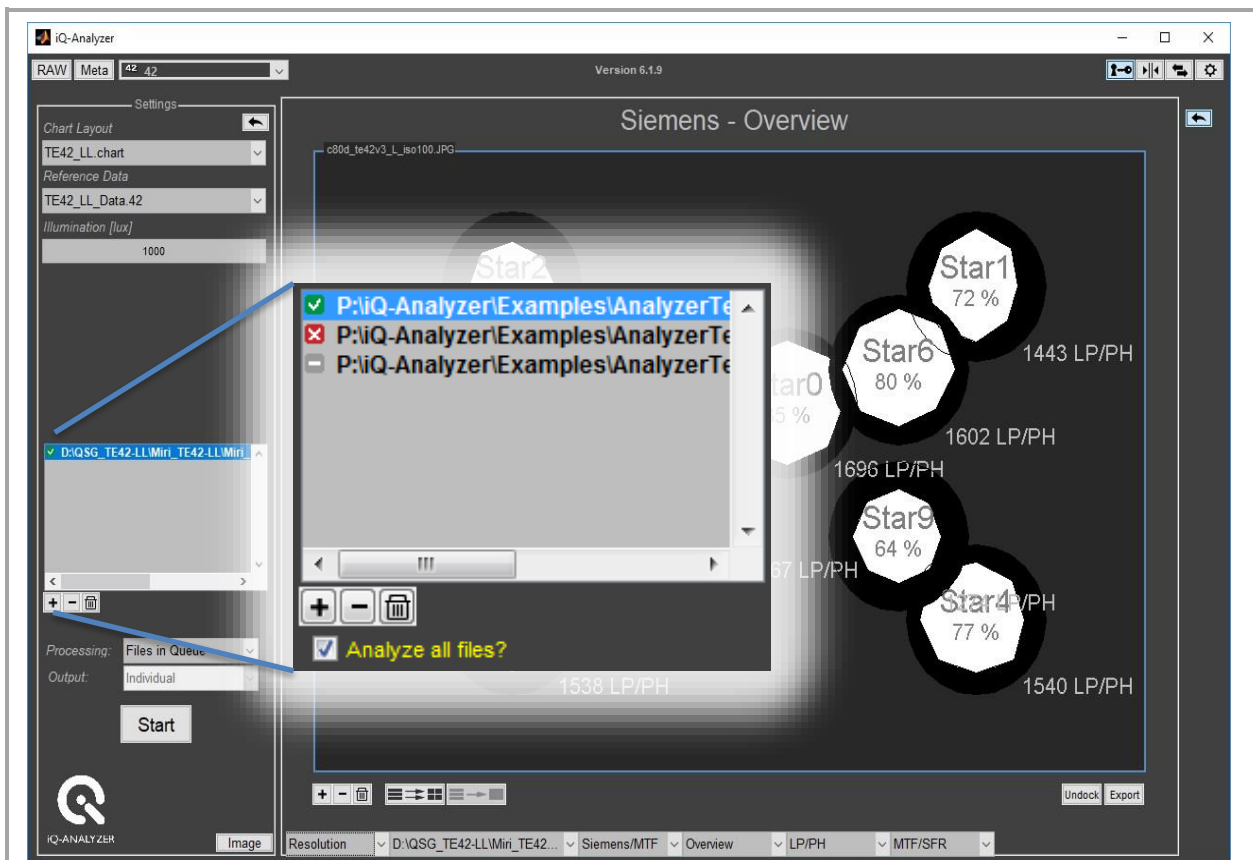
OECF / SNR

TE264_02.jpg

Make	NIKONCORPORATION
Model	NIKOND800
Width	4800
Height	3200
Time	10
F-Stop	5.6
ISO	100
f[mm]	48.0
EV	-1.00
Serial:	
Lens:	
Firmware:	Adobe Photoshop C
Illumination [lux]:	
Object Distance [m]:	
Laboratory:	
Operator:	

SNR_total	76.15
STD_total[DV]	1.15
SNR_temp	-
STD_temp[DV]	-
SNR_fp	-
STD_fp[DV]	-
mean	
VN(1)	0.7
dL(1)	0.4
du(1)	0.2
dv(1)	0.2
VN(2)	0.4
dL(2)	0.2
du(2)	0.2
dv(2)	0.1
VN(3)	0.5
dL(3)	0.3
du(3)	0.2
dv(3)	0.1
max	
DR_total[-stop]	11.65
DR_total[D]	3.51
DR_temp[-stop]	-
DR_temp[D]	-
WB[DV]	0.5
WB[C]	0.3
DR[DV]	254.1
ISOsat	64
ISOS/N10	1000
ISOS/N40	200

Export results



Analysis successful



Analysis failed



Not analyzed yet



Analyze successfully analyzed images again?

Change settings and re-start analysis



8 NEED HELP?



Read the iQ-Analyzer user manual*



Attend our Webinars**



Ask our Support Team

9 CONTACT US

**Image Engineering GmbH & Co. KG
Support**

T +49 2273 99 991 0
F +49 2273 99 991 10

support@image-engineering.de

Germany

**Image Engineering GmbH & Co. KG
Sales**

T +49 2273 99 991 0
F +49 2273 99 991 10

sales@image-engineering.de

Germany

**Image Engineering GmbH & Co. KG
Direct Marketing Sales and Applications**

T +1 669 200 8921

sales@image-engineering.us

USA

* https://www.image-engineering.de/content/products/software/analyzer/downloads/iQ-Analyzer_manual.pdf

** <https://www.image-engineering.de/products/software/376-iq-analyzer#webinars>