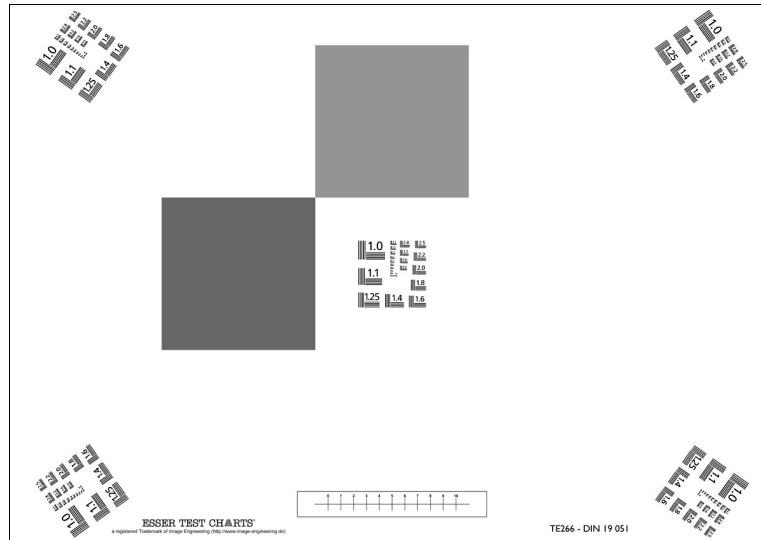


CERTIFICATE

MICROFILM TEST CHART – DIN 19051

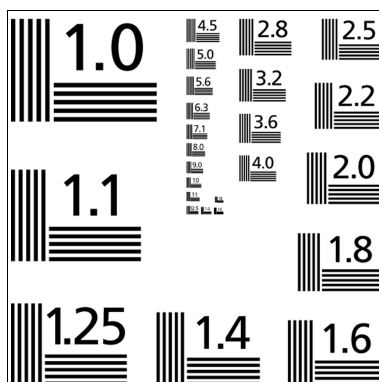
REFLECTIVE



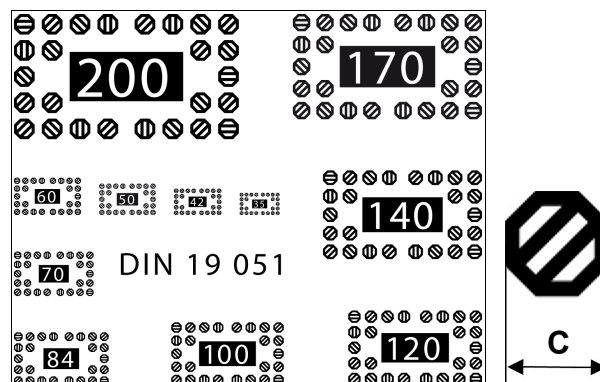
The DIN 19051 standard describes a reflective test chart for the calibration of a microfilm production chain. The sheet can be mounted on an even, stable carrier to put on a table or hung up on whatever kind of mounting is available.

Corresponding to the current version of the DIN 19051, the new default chart TE266 will use the line pair target known as DIN 19051 (ISO 3334) pattern No. 2 since it is possible to run a resolution measurement with the MTF as realizable result. Else, it is more intuitive to evaluate and more widely used. This pattern consists five pairs of lines (black and white, horizontal and vertical) with frequencies from 1-18 line pairs per millimeter, ordered counterclockwise in decreasing resolution.

On request, Image Engineering offers the version with DIN 19051 (ISO 446) pattern No. 1 for the visual image quality analysis. The index of each block shows the character width c in 1/100 mm. The direction of the two lines inside the octagon must be recognized without problems for seven out of eight symbols.



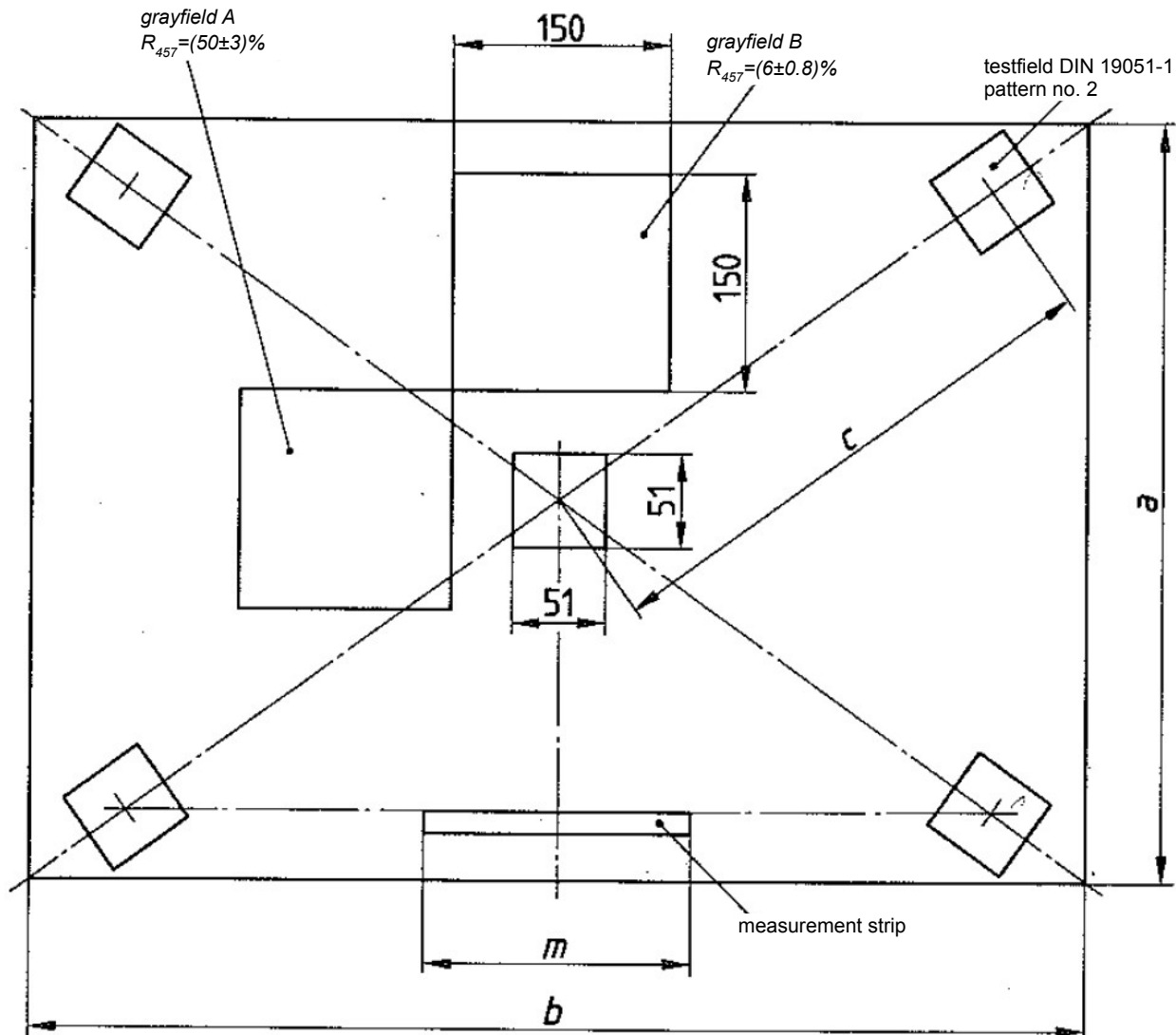
DIN 19051 (ISO 3334) pattern No 2



DIN 19051 (ISO 446) pattern No 1

The TE266 contains 2 squares with defined densities, 5 fields with resolution pattern arranged in the center and the corners of the target and a measurement strip for reproduction scale calculation.

All dimensions mentioned below are indicated in [mm].



Available chart size:

Format (DIN 476)	a x b	c	m ± 1
A2	420 x 594	297	148