



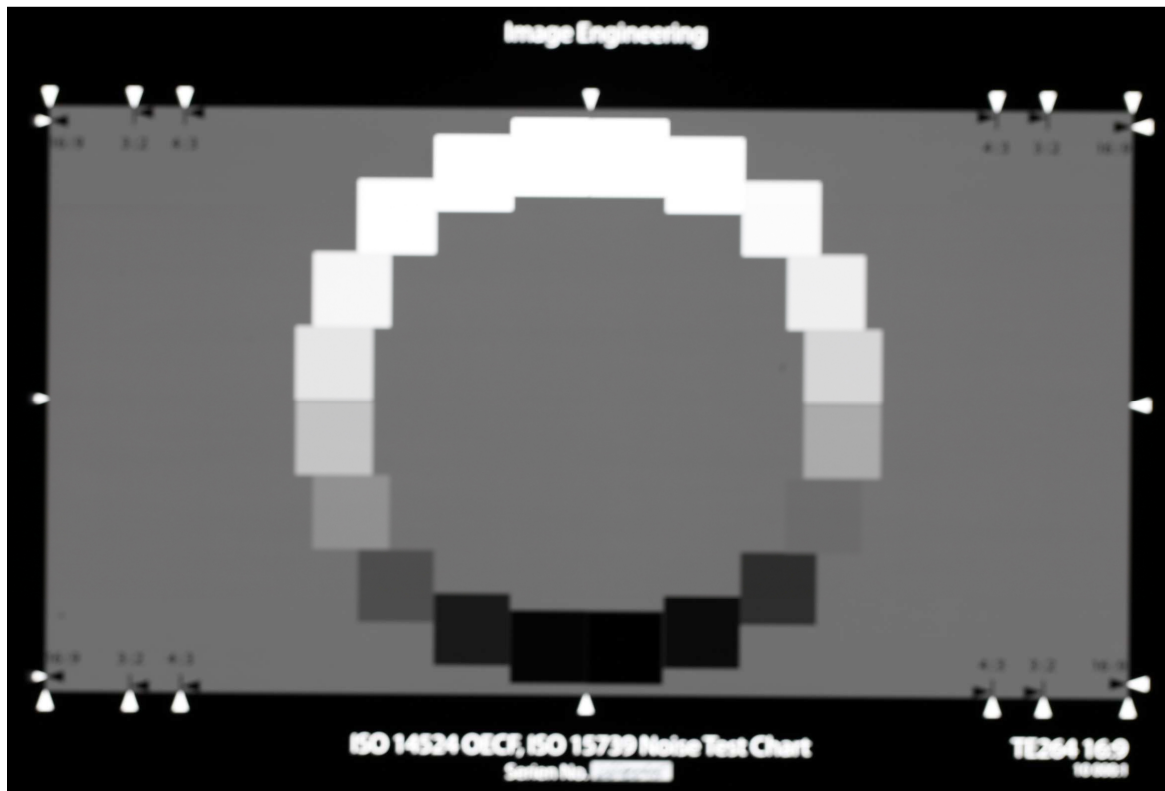
---

# Quick Start Guide

---

TE264, TE269

July 17, 2017





# 1 PREPARE CHART

Mount chart in correct orientation

Illuminate uniformly



## 2 PREPARE CAMERA

**chart size  
≠  
picture size**

To avoid shading influences of the camera it is recommended to align the chart not full format in the image.

**Align camera and chart**



Check camera settings and take pictures

### 3 START SOFTWARE

**FREE DEMO** **OR BUY**

Request free demo or buy

[www.image-engineering.de](http://www.image-engineering.de)

Use shipped DVD or download\*

Install

Copy reference files if necessary

Attach USB dongle and run

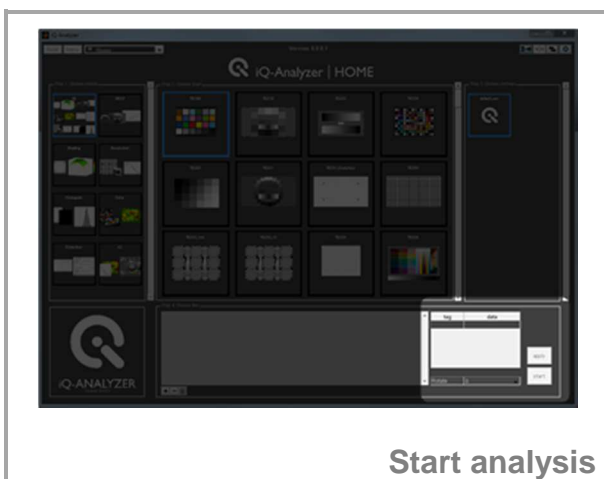
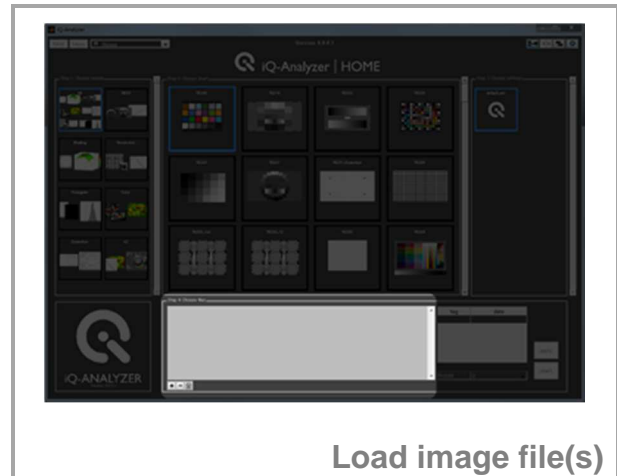
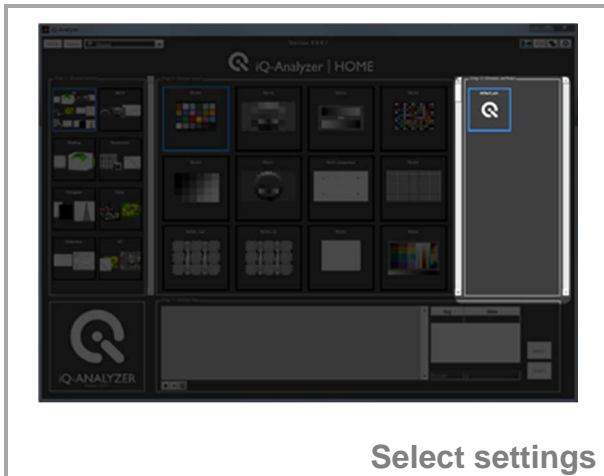
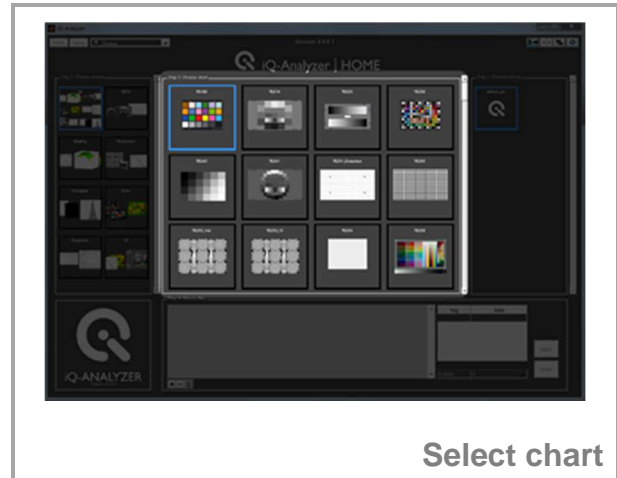
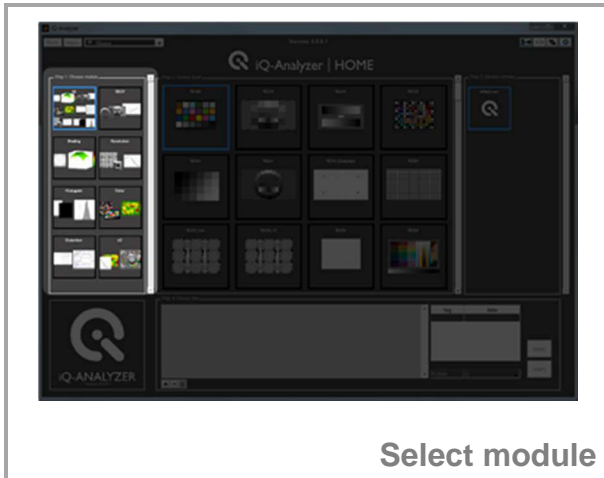
For a three month trial version of the iQ-Analyzer please contact

[sales@image-engineering.de](mailto:sales@image-engineering.de)

\* <https://www.image-engineering.de/products/software/376-ig-analyzer#downloads>



## 4 USE HOME SCREEN



For customizing the HOME SCREEN to your specific needs, please read the

**iQ-Analyzer user manual \***

**Please note: Default Home Screen just contains default settings.**

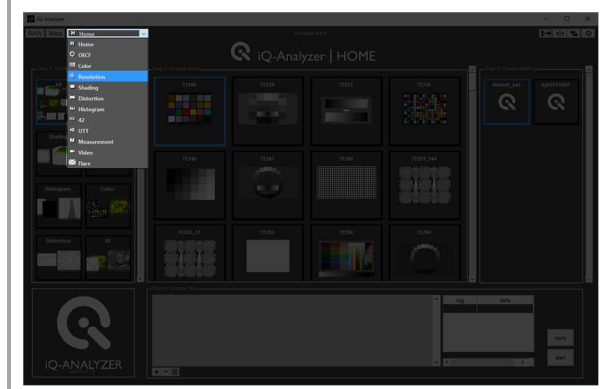
\* [https://www.image-engineering.de/content/products/software/analyzer/downloads/iQ-Analyzer\\_manual.pdf](https://www.image-engineering.de/content/products/software/analyzer/downloads/iQ-Analyzer_manual.pdf)



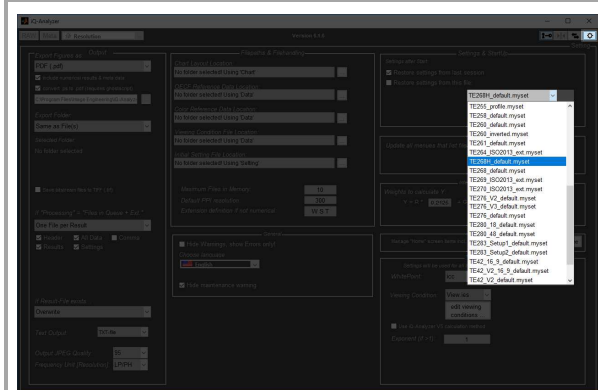
## 5 USE OF ADMINISTRATOR MODE



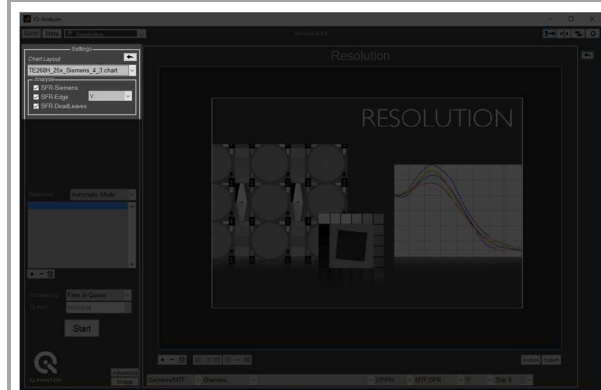
Enable Administrator Mode



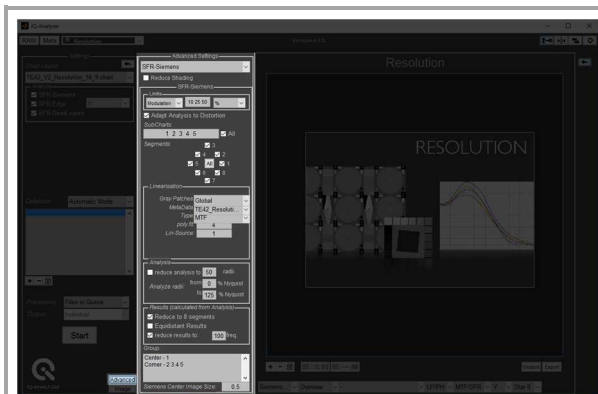
Choose module



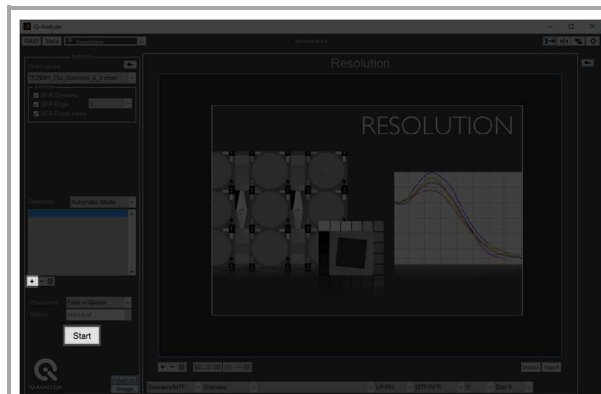
Go to Advanced Settings and choose .myset file for chart depending Settings



Check chart dependend Settings



Check Advanced Settings



Load image file(s) and start analysis

For all chart specific information about Settings and Advanced Settings please read the

**iQ-Analyzer user manual \***

\* [https://www.image-engineering.de/content/products/software/analyzer/downloads/iQ-Analyzer\\_manual.pdf](https://www.image-engineering.de/content/products/software/analyzer/downloads/iQ-Analyzer_manual.pdf)



## 6 WATCH THE RESULTS

**Image**

**Result**

Toggle between image and results

OEFC	Average	RGB	Luminance	logarithmic
VN	C:\image_engineering\analyzer_5\imageSet\cam	Y	Density	linear
Noise	C:\image_engineering\analyzer_5\imageSet\cam	RGBY	Exposure	logarithmic
OEFC	Average	RGB	Luminance	logarithmic

Toggle between different result views



Hide and show side panels

OEFC\_TE264\_DSLR14\_00.JPG

OEFC\_TE264\_DSLR14\_00\_check.jpg

OEFC\_TE264\_DSLR14\_00\_oecf.txt

OEFC\_TE264\_DSLR14\_00\_oecf\_average.txt

View auto-generated result files

**Congratulation!**  
**You ran your first analysis!**





# 7 WHAT'S NEXT?

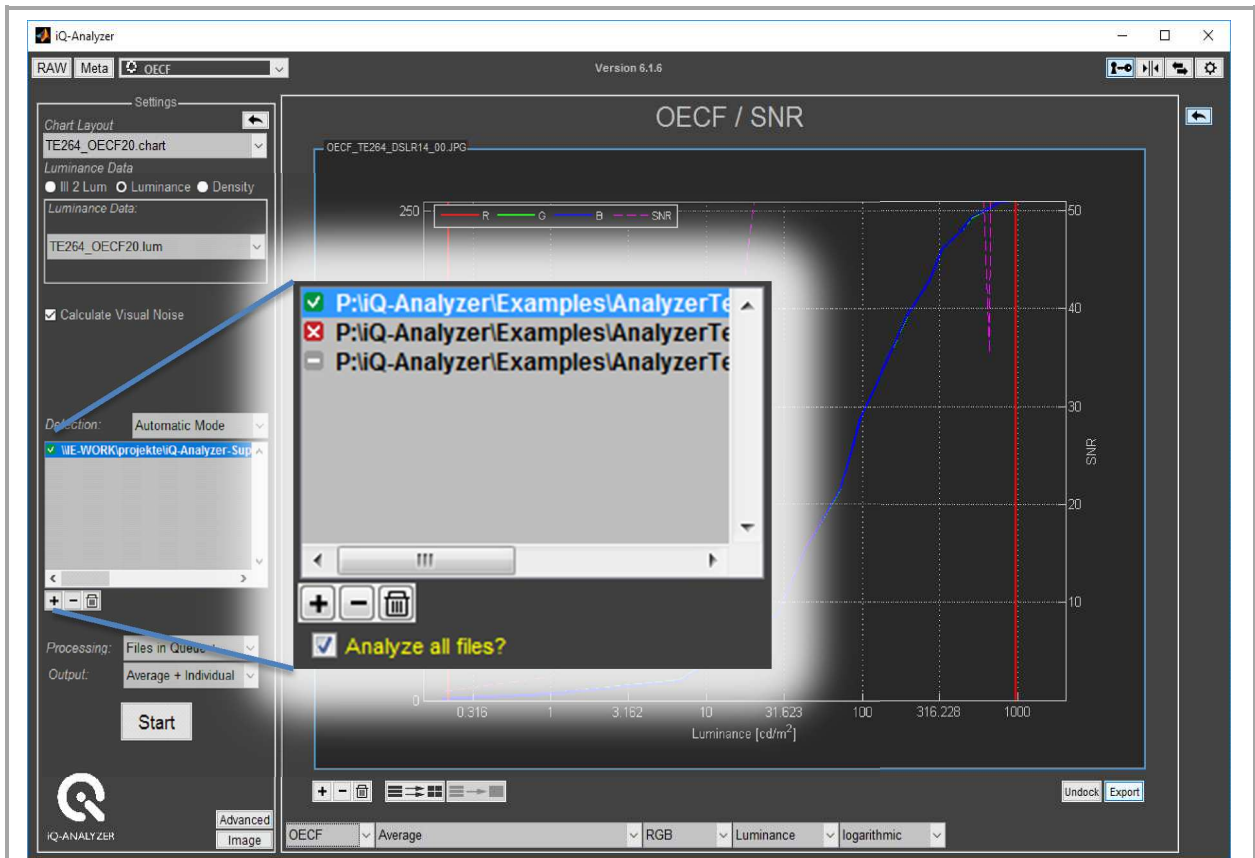
**Export**

**OEFC / SNR**

Make: exampleimage  
 Model: DSLR14  
 Width: 2808  
 Height: 1872  
 Time: 6  
 F-Stop: 5.6  
 ISO: 100  
 f [mm]: 100.0  
 EV: -  
 Serial:   
 Lens:   
 Firmware: noExif  
 Illumination [lux]:   
 Object Distance [m]:   
 Laboratory:   
 Operator:

SNR_total	95.84	du(3)	0.1	0.3
SNR_total [dB]	39.63	dv(3)	0.1	0.3
STD_total [DV]	0.91	DR_total [f-stop]	12.10	
SNR_temp	-	DR_total [D]	3.64	
SNR_temp [dB]	-	DR_total [dB]	72.87	
STD_temp [DV]	-	DR_temp [f-stop]	-	
SNR_fp	-	DR_temp [D]	-	
SNR_fp [dB]	-	DR_temp [dB]	-	
STD_fp [DV]	-	WB [DV]	0.2	
	mean	max	WB [C]	0.1
VN(1)	0.5	1.0	DR [DV]	254.8
dL(1)	0.4	0.7	ISOsat	25
du(1)	0.1	0.4	ISOS/N10	500
dv(1)	0.1	0.4	ISOS/N40	160
VN(2)	0.3	0.7		
dL(2)	0.2	0.5		
du(2)	0.1	0.3		
dv(2)	0.1	0.2		
VN(3)	0.4	0.8		
dL(3)	0.3	0.5		

Export results



**Analysis successful**



**Analysis failed**



**Not analyzed yet**



**Analyze successfully analyzed images again?**

**Change settings and re-start analysis**



## 8 NEED HELP?



Read the iQ-Analyzer user manual\*



Attend our Webinars\*\*



Ask our Support Team

## 9 CONTACT US

**Image Engineering GmbH & Co. KG  
Support**

T +49 2273 99 991 0  
F +49 2273 99 991 10

[support@image-engineering.de](mailto:support@image-engineering.de)

Germany

**Image Engineering GmbH & Co. KG  
Sales**

T +49 2273 99 991 0  
F +49 2273 99 991 10

[sales@image-engineering.de](mailto:sales@image-engineering.de)

Germany

**Image Engineering GmbH & Co. KG  
Direct Marketing Sales and Applications**

T +1 669 200 8921

[sales@image-engineering.us](mailto:sales@image-engineering.us)

USA

\* [https://www.image-engineering.de/content/products/software/analyzer/downloads/iQ-Analyzer\\_manual.pdf](https://www.image-engineering.de/content/products/software/analyzer/downloads/iQ-Analyzer_manual.pdf)

\*\* <https://www.image-engineering.de/products/software/376-iq-analyzer#webinars>